



# Caledonian

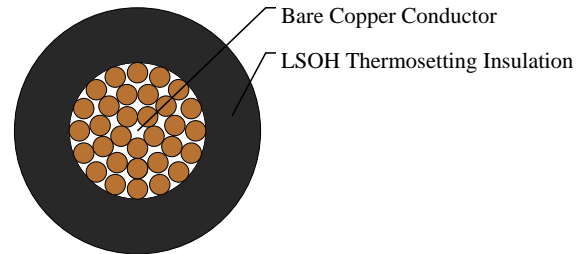
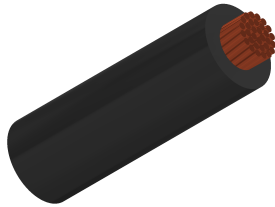
BS 7211 LSOH Sheathed Cables

[www.caledonian-cables.com](http://www.caledonian-cables.com)

[marketing@caledonian-cables.com](mailto:marketing@caledonian-cables.com)

## 2491B Single Core Cable

17AWG



## APPLICATIONS

2491B is equivalent to harmonized code H05Z-K, these cables are designed for the internal wiring of switchboards and distributor boards with an alternating nominal voltage up to 1000 Volts or a direct voltage up to 750 volts. Generally install in pipes or ducts and internal wiring of appliances with maximum operating temperature of 90° C, and generally in areas (such as public and government buildings) where smoke and toxic fumes may cause a threat to life and equipment. The cables produce no corrosive gasses when burnt which is particularly important where electronic equipment is installed.

## FIRE PERFORMANCE

Flame retardant	IEC 60332-1
Smoke density	EN 50268 / IEC 61034
Corrosiveness of combustion gases	EN 50267-2-2, IEC 60754-2
Flame test: flame-retardant	EN 50265-2-1, IEC 60332-1

## VOLTAGE RATING

300/500V

## CABLE CONSTRUCTION

Fine bare copper strands

Strands to IEC 60228 CI-5

Thermosetting core insulation type EI5

LSOH - low smoke, zero halogen

## COLOUR CODE

Insulation Colour: Green/Yellow, Black, Blue, Brown, Red, White, Yellow, Grey, Violet, Grey, Orange, Pink

## Electrical Properties

Working voltage: 300/500V

Test voltage: 2000V

Minimum bending radius: 5 x Ø

Flexing temperature: -15° C to +90° C



# Caledonian

BS 7211 LSOH Sheathed Cables

[www.caledonian-cables.com](http://www.caledonian-cables.com)

[marketing@caledonian-cables.com](mailto:marketing@caledonian-cables.com)

Static temperature: -40° C to +90° C

Insulation resistance: 10 MΩ x km

## DIMENSION AND PARAMETERS

No. of Cores × Cross- sectional Area	AWG Size	Nominal Insulation Thickness	Nom. Overall Diameter	Nominal Copper Weight	Approx. Weight	Min. Insulation Resistance at 90 °C
No. × mm <sup>2</sup>		mm	mm	kg/km	kg/km	MΩ × km
1x1	17(32/32)	0.6	2.4-2.9	9.6	15	0.01